



NX302A 301A 301E

Features

- Trip starting indicator
- Detection of no connection to current transformer for extra safety
- Relay tripped indicator
- High immunity to electrical interference

Features for NX 302A only

- Safety output contact
- Earth leakage level indicators
- Remote reset and remote test functions

Technical Data

AUXILIARY SUPPLY

Model NX301A / 302A -240A : 198 ~ 265 V AC
 Model NX301A / 301E -110A : 94 ~ 127 V AC
 Rated frequency : 50 / 60 Hz
 VA rating : 3 VA typical

SETTING RANGES

Sensitivity adjustment : 0.03 A to 30 A
 Delay time adjustment : 0 sec to 3.0 sec

PERFORMANCE

Setting accuracy : -15% to +0%
 Timing accuracy : ±5%

OUTPUT CONTACTS

Contact arrangement : 1 x manual reset type
 : 1 x safety contact*
 : NC and NO contacts available
 Rated voltage : 250 V AC
 Contact rating : 5 A
 Expected electrical life : 100,000 operations at rated current
 Expected mechanical life : 5 x 10⁶ operations

INPUTS

Remote Test* / Reset Inputs*: N.O. dry contact

INDICATORS

Auxiliary supply : Green indicator
 Time delay : Red indicator
 Trip : Red indicator
 Real-time leakage current : Red indicator

ZERO-PHASE CURRENT TRANSFORMER

To operate with Mikro's ZCT series of current transformer

ENVIRONMENTAL CONDITIONS

Temperature : -10°C to 55°C
 Humidity : 5% to 95%, non-condensing

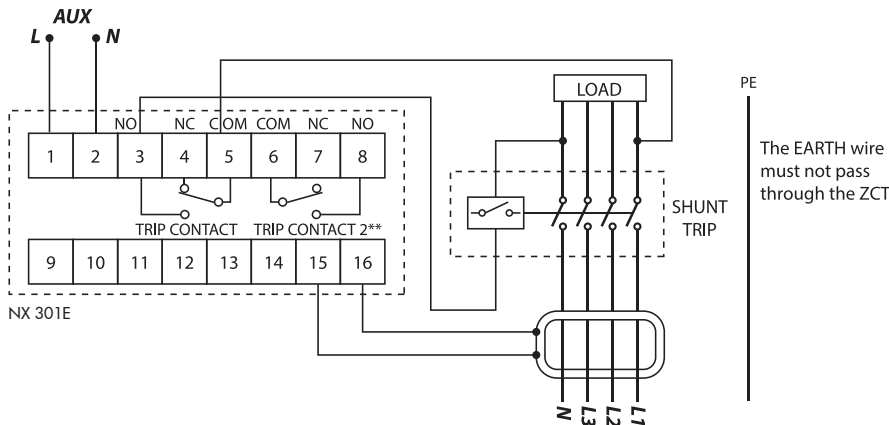
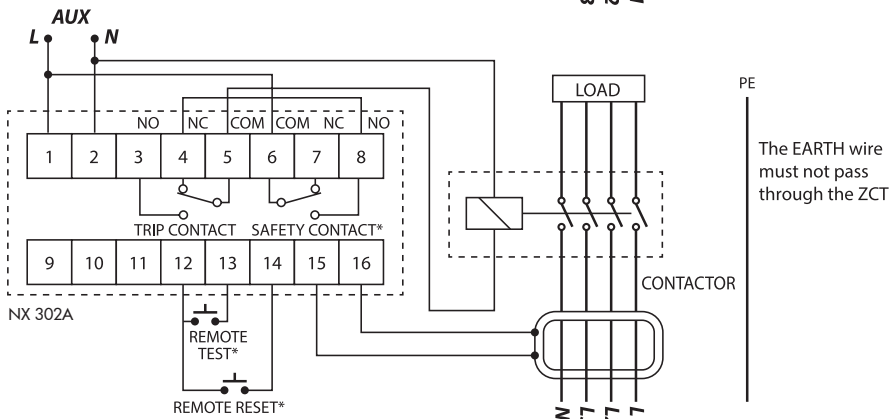
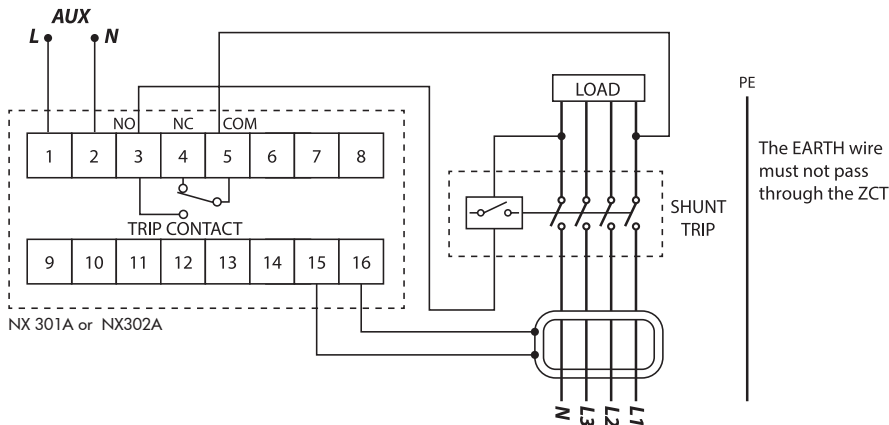
MECHANICAL

Mounting : Panel mounting
 Dimension (mm) : 96(w) x 96(h) x 90(d)
 Approximate weight : 0.4 kg (excluding ZCT)

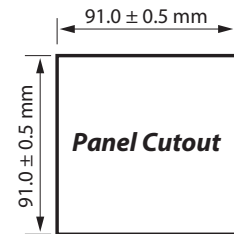
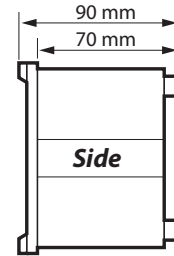
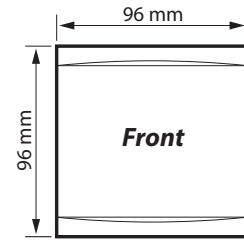
* Applicable to NX302A series only

** Applicable to NX301E series only

Typical Application Diagram



Case Dimensions



Ordering Information

MODEL	DESCRIPTION
NX301A - 240A	For 50 Hz system, auxiliary voltage 198 ~ 265 V AC
NX301A - 110A	For 50 Hz system, auxiliary voltage 94 ~ 127 V AC
NX302A - 240A	For 50 Hz system, auxiliary voltage 198 ~ 265 V AC
NX302A -110A	For 50 Hz system, auxiliary voltage 94 ~ 127 V AC
NX301E - 240A	For 50 Hz system, auxiliary voltage 198 ~ 265 V AC
NX301E -110A	For 50 Hz system, auxiliary voltage 94 ~ 127 V AC
NX301A - 240A6	For 60 Hz system, auxiliary voltage 198 ~ 265 V AC
NX301A - 110A6	For 60 Hz system, auxiliary voltage 94 ~ 127 V AC
NX302A - 240A6	For 60 Hz system, auxiliary voltage 198 ~ 265 V AC
NX302A -110A6	For 60 Hz system, auxiliary voltage 94 ~ 127 V AC
NX301E - 240A6	For 60 Hz system, auxiliary voltage 198 ~ 265 V AC
NX301E -110A6	For 60 Hz system, auxiliary voltage 94 ~ 127 V AC

ZCT 40S 60S 80S 120 210S



40S



60S



80S

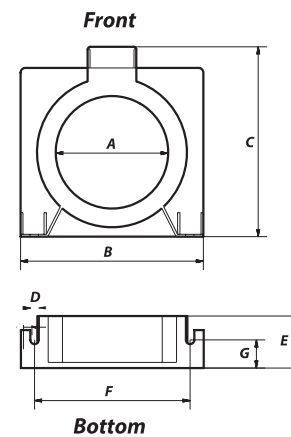


120S

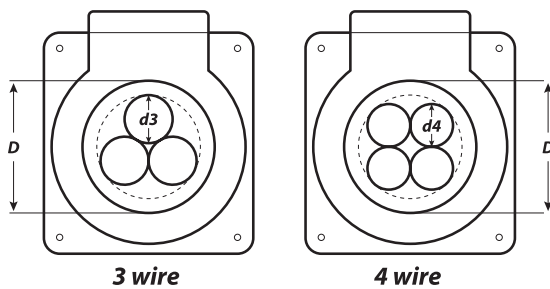


210S

Case Dimensions



Calculation to determine Inner Diameter of ZCT required



MODEL	D ZCT inner diameter (mm)	d3, 3wire Up till wire diameter (mm)	d4, 4wire Up till wire diameter (mm)
ZCT 40S	40	14	12
ZCT 60S	60	23	21
ZCT 80S	80	32	29
ZCT 120S	120	51	46
ZCT 210S	210	93	83

Example:

For a single core CU / PVC insulated, non-sheathed 450 / 750 V 50mm² conductor, it's nominal overall diameter is 11.7mm. To pass 4 wires through the ZCT, we can use ZCT40S as the maximum diameter it can support is up till 12mm.

DIMENSION (mm)

	ZCT Model				
	40S	60S	80S	120S	210S
A	40	60	80	120	210
B	89	105	130	180	310
C	94	110	135	195	311
D	6	6	6	6	6
E	37	37	37	37	37
F	75	87	112	159	292
G	27	27	27	27	18

Ordering Information

MODEL	DESCRIPTION	WEIGHT
ZCT40S	40mm inner diameter	0.16 kg
ZCT60S	60mm inner diameter	0.20 kg
ZCT80S	80mm inner diameter	0.28 kg
ZCT120S	120mm inner diameter	0.57 kg
ZCT210S	210mm inner diameter	1.5 kg