

25A IP55 Connection Unit with Indicator

Opal

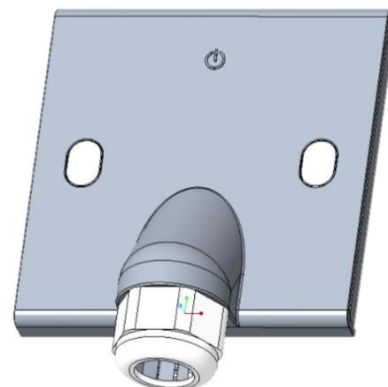
Specifications

Electrical:

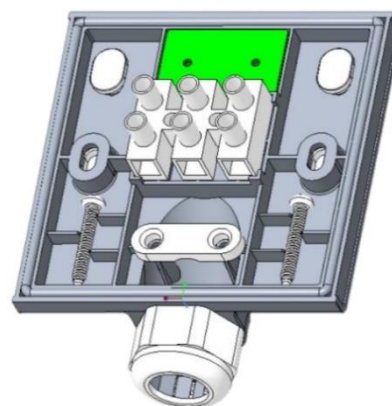
- Rated Voltage: 250VAC 50/60Hz
- Rated Current: 25A
- Recommended wire size: 2.5mm²- 6mm²

Mechanical:

- Faceplate: Polycarbonate
- Overall dimension: 88mm x 86mm x 10mm (HxWxD)
- Fixing screw centre: 60.3mm
- Fix Screw: M3.5 x 0.6 x 23.5mm±
- Mounting box: 75 x 75 x 35mm (Std. BS Flushed type)



Front view



Back view

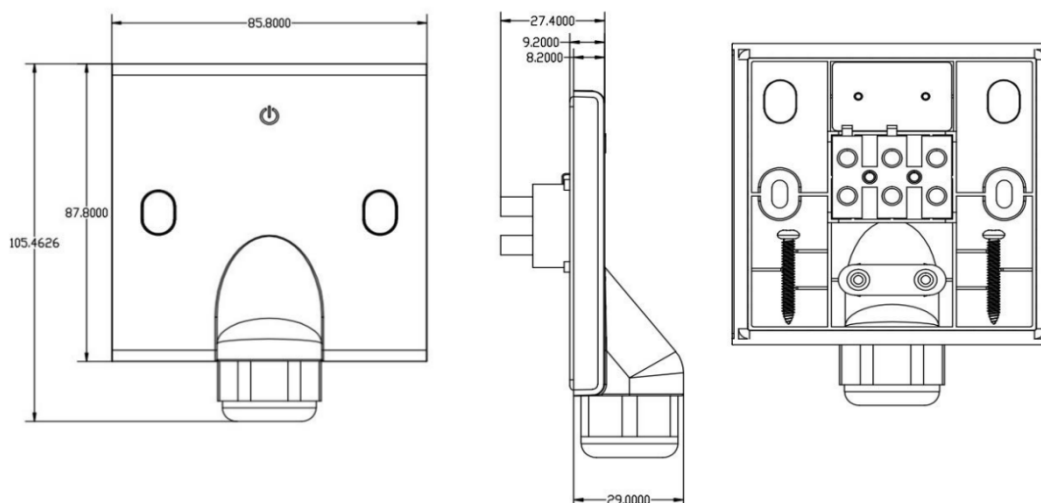
Environmental:

- Operating Temperature: -5°C to +40°C
- Ingress Protection Rating: IP55

Standards:

- MS1144
- IEC60529 (IP55)

Product Dimension



Ordering information

Colour	Part No.
White	GA525-IP55

The information given in this document may be amended. You are also reminded that all products must be installed by a qualified professional.