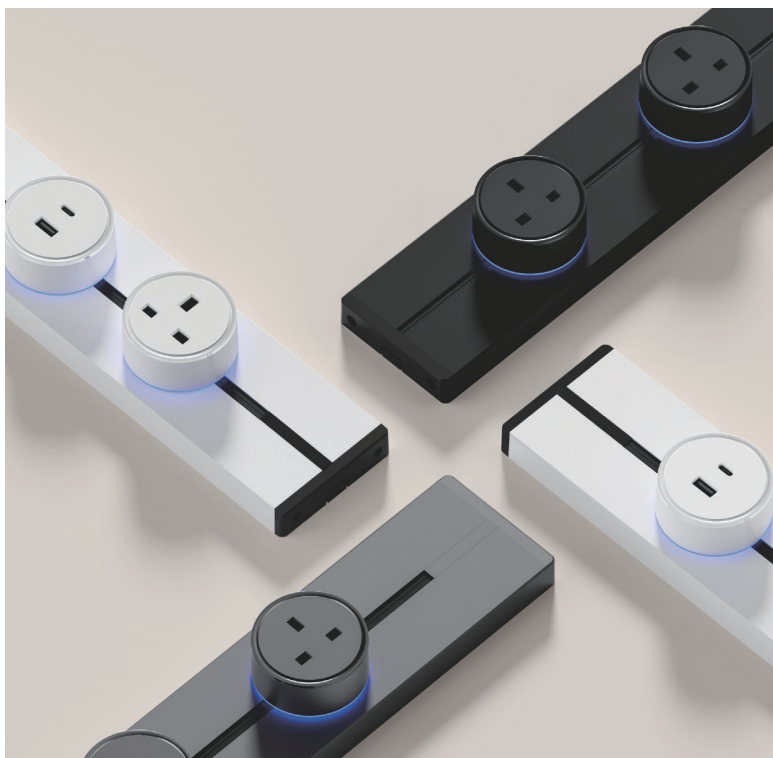


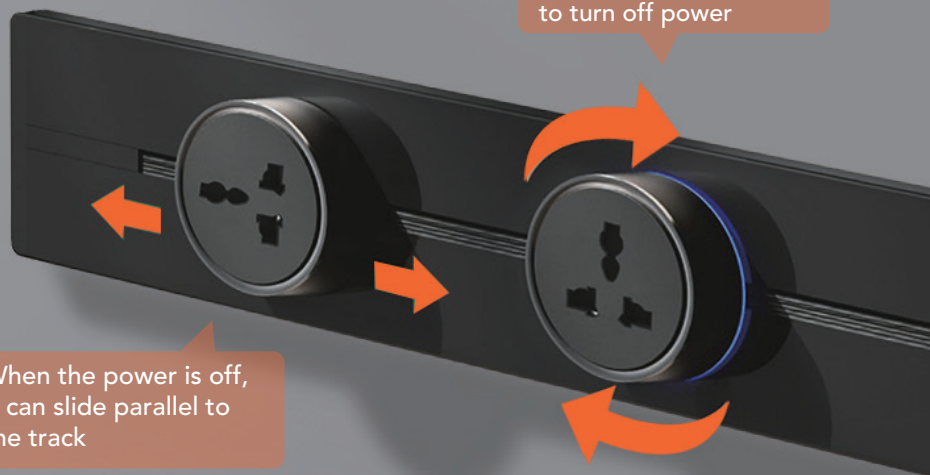
POWER TRACK & SOCKET



Flexible increase decrease
and free sliding

Rotate clockwise 90°
to turn on power,
rotate counterclockwise
to turn off power

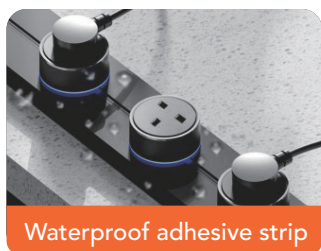
When the power is off,
it can slide parallel to
the track



USING "CORE" TO IMPROVE QUALITY



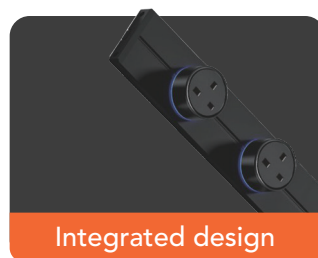
LED ambient aperture



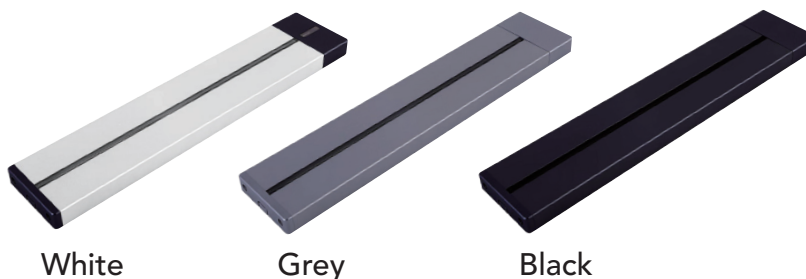
Waterproof adhesive strip



High quality copper core



Integrated design



White

Grey

Black

POWER TRACK SOCKET-SURFACE

TYPE	VOLTAGE	MAX LOAD POWER	RATE CURRENT	PROTECTION GRADE	DIMENSION (MM)	COLOR	QTY/CTN
TR800S/40CM	110-250V~	8000W	32A	IP20	400*82*19	Black/White/Grey	20
TR800S/60CM	110-250V~	8000W	32A	IP20	600*82*19	Black/White/Grey	20
TR800S/80CM	110-250V~	8000W	32A	IP20	800*82*19	Black/White/Grey	15
TR800S/100CM	110-250V~	8000W	32A	IP20	1000*82*19	Black/White/Grey	15



Universal Three-hole
(Baking paint)



UK standard
(Baking paint)



USB/A+C port
(Baking paint)



Universal Three-hole
(Baking paint)



UK standard
(Baking paint)



USB/A+C port
(Baking paint)



Universal Three-hole
(Baking paint)



UK standard
(Baking paint)



USB/A+C port
(Baking paint)

TRACK ADAPTER SOCKET

MODEL CODE	TYPE SOCKET	VOLTAGE	RATE CURRENT	PROTECTION GRADE	DIMENSION (MM)	COLOR	QTY/CTN
SK800-B/13A	British	110-250V~	13A	IP20	φ61*40	Black/White/Grey	120
SK800-U/16A	Universal	110-250V~	16A	IP20	φ61*40	Black/White/Grey	120
USB+C/3.1A	USB+C	110-250V~	5V 3A	IP20	φ61*40	Black/White/Grey	120